

The Warragul Siren



THE VOICE OF THE
WARRAGUL THEATRE
COMPANY



ANNIE STILL BREAKING RECORDS FOR WARRAGUL THEATRE COMPANY



Warragul Theatre Company is thrilled to announce an unprecedented amount of Nominations in the Music Theatre Guild of Victoria awards for the 2007 production of ANNIE. The Music Theatre Guild of Victoria Inc. is a not-for-profit organisation for the ongoing support, encouragement and development of non-professional music theatre in the state of Victoria, Australia. It is prestigious and difficult to get nominated for the guild as it is Victoria wide covering all amateur companies.

Only the absolute best of best are seen here and this year WTC is celebrating not one nominations but 4! These are:

Settings: Sue Acheson/David Pickburn, *Annie*, WTC

Female Performer in a supporting role.: Stephanie Powell as Grace Farrell, *Annie*, WTC.

Junior Performer in an Open Production: Julia van der Hoeven as Annie, *Annie*, WTC

Gladys Moncrieff Award for First Performance in a Featured Role: Steve Wiegerink as Daddy Warbucks, *Annie*, WTC.

We also have 3 commendations that are as follows:

Open Section – Direction: David Pickburn, *Annie*, Warragul Theatre Company

Male Performer in a Leading Role: Steve Wiegerink as Daddy Warbucks, *Annie*, WTC.

Junior Performers in an Open Production: Victoria Caruso as Annie, *Annie*, WTC

The production of ANNIE was undertaken at a critical time for the Company. We lacked funds but in true community spirit and with great support from sponsors and our hard working team we soldiered on to stage one of the most successful shows in WTC history. To have had four nominations and 3 commendations for the Music Theatre Guild of Victoria Awards is just an amazing achievement and a wonderful recognition for the company.

MESSAGE FROM THE PRESIDENT



Hi Everyone

Well another show is well underway and from what I hear at rehearsals it is going to be amazing. To those who got in well done, many excellent people did not make the cut so make your time with the company seriously, give 100% at rehearsals and support the company in any other ways possible i.e. paying fees on time, supporting fundraising and encouraging everyone you know to come and see the show.

To those excellent applicants that didn't get in I know how disappointing it can be. We do hope however that this spectacular show will be such a hit that it will continue to lift our profile and bank balance to allow this company to continue to have more choices in productions in the future. We have come from a very fragile position and we are only getting stronger but... we still need your commitment and help. This company would be nothing without all those excellent people that work tirelessly behind the scenes. They are the glue that holds it all together.

We plan on having our first fundraising evening in February but we need to raise about \$5000 through sponsorship and fundraising. Not an easy task. This is so we can have the special keyboards to make the CATS sound so unique and also so we can consider pyrotechnics.

This show is complicated, as we all found out at information night. It will need everyone's input and ideas on how to meet the budget requirements. If anyone has any ideas for fundraising or people or businesses that may want to sponsor the company we are developing our new terms and brochures which offer excellent opportunities for sponsors. We will be handing these out at rehearsals and expect that everyone, no matter how small or large will be able to bring some time of sponsorship to the company, whether it be in the form of a donated gift for fundraising or a monetary sponsor. So put on your thinking caps and get resourceful.

The committee and production team have been working long and hard to create the opportunity for you to perform and we need your support. I don't want to hear "I don't know any one." I am happy to help with ideas on what you can do but I don't want to hear can't do's.

Our first advertising will be out in November in the West Gippsland Art Centre Seasons brochure. We are graciously supported by WGAC and we have a great opportunity to start selling tickets soon as they will be on sale in December to the public.

Anyone who wants to contact me can on
thebeckster30@hotmail.com

CHOOKAS
Bec



MERRY CHRISTMAS
DON'T EAT TOO MUCH BECAUSE YOU HAVE TO WEAR LYRCRA IN THE NEW YEAR.

SOME SUMMER GOOD LOOK TIPS

To make your hips and thighs look slim on the beach, dig two tunnels under your thighs and make a small dent in the sand for your bottom. Place your towel over the top and sit in the dug out area. Hey presto, no bulging thighs and hips!!

(Hmmm there will be no sand on stage however, not even kitty litter!)

Also we expect you all to increase your flexibility at least this much by the time we return after the break>>>>



HELP WANTED

There are still many ways to become involved in the show. We need:

- Backstage Crew
- Sewers
- Front of House team (program sales etc)
- Make up team
- Marketing
- Set construction.

You would be surprised how a willing helper can make all the difference in getting things running smoothly.

If you know anyone that may be able to help please pass on the information to them and contact our Production Manager Bob McPherson on: mmac2@bigpond.com
Tel: 5127 6644

Cat Quote

“There are two means of refuge from the miseries of life — music and cats” (Albert Schweitzer)

CATS T-SHIRTS

We will be doing CATS T-shirts soon and we hope everyone gets one for themselves and wears it to death between now and the show as it is a great way to advertise the show and a great conversation starter. You would be surprised how many people come to the show if they have met someone in it. These are people that would have never come otherwise, or it is just enough incentive for those thinking about it to go ahead and buy a ticket or two or three.



Cat Fact

Cats have five toes on each front paw, but only four toes on each back paw.

TICKET SALES – CHRISTMAS IDEAS

Buy a loved one a ticket for CATS. They will be on sale and make a perfect gift to look forward to.



Our audience capacity is 498 per show. We hope we sell out not just the last few shows as we did with Annie but the first 2 weekends as well. Let people know there are early bird prices so it is well worth getting in early. If you don't get in early you may not get in at all. SERIOUSLY. This show has created a lot of excitement in the community and many people are just waiting for a chance to see the show so it is a real possibility if you wait you will miss out.



PRICES	FULL PRICE	EARLY BIRD
ADULT	\$37	\$33
WGAC MEMBER	\$32	\$32
CONCESSION	\$35	\$32
YOUTH	\$22	\$20
FAMILY	\$95	\$90
(1 adult 3 chld, or 2 adults 2 chld)		

EARLY BIRD PRICES ONLY LAST TILL THE END OF MARCH SO SAVE \$\$\$\$\$\$\$\$ AND GET IN NOW!!!!.

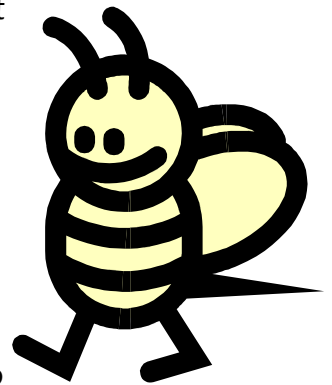
WORKING BEES

Just a heads up to let you all know at some time during the show you will be rostered on to help out at the GREEN SHED.(for those newbie's that is the shed where we construct our sets and keep all our belongings, also located in Warragul not far from the Arts Centre.)

This can be a lot of fun and not a hard task at all; sometimes it involves some easy painting task, sweeping, sorting etc. This effort makes such a

difference to those hard working set constructors. Many shows have seen only a few hard working WTC members involved but this year that is going to change. We all want the same opportunities so we all have to help create them.

It is a great way to get to know the other members of your crew and get that community feel for the company. So when it is your turn go happily and be as useful as you can.



HAVE YOU ANY INPUT!

For any ideas or to provide any information for future articles please contact your editor:

Lynn Mizen

Phone: 5624 2541

Email: lamizen@hotmail.com

